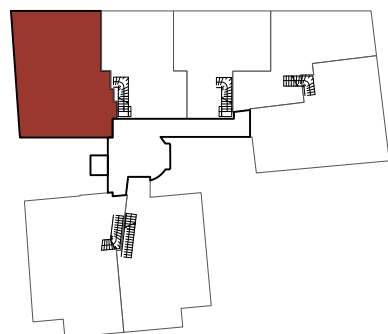
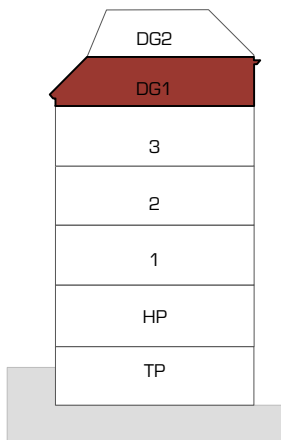


### 1. DG

Zimmer I	16,09 m <sup>2</sup>
Zimmer II	12,00 m <sup>2</sup>
Zimmer III	34,71 m <sup>2</sup>
Vorraum	5,17 m <sup>2</sup>
Gang	5,22 m <sup>2</sup>
Abstellraum	3,57 m <sup>2</sup>
Bad	5,63 m <sup>2</sup>
WC	2,15 m <sup>2</sup>
Terrasse	11,66 m <sup>2</sup>

### Gesamt

Wohnnutzfläche	<b>84,54 m<sup>2</sup></b>
Terrasse	11,66 m <sup>2</sup>



Planstand  
22.09.2020

