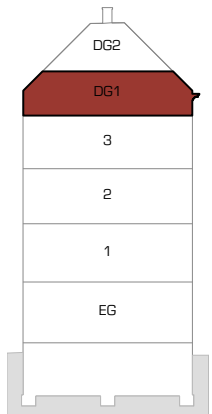
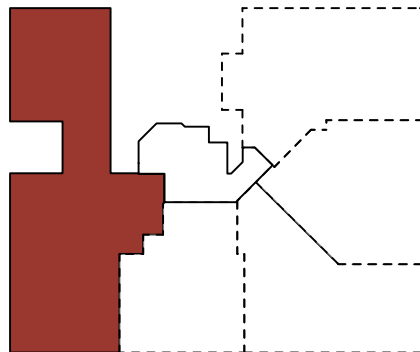


Datenquelle: Stadt Wien – data.wien.gv.at

Lageplan 1:1500



M 1:500



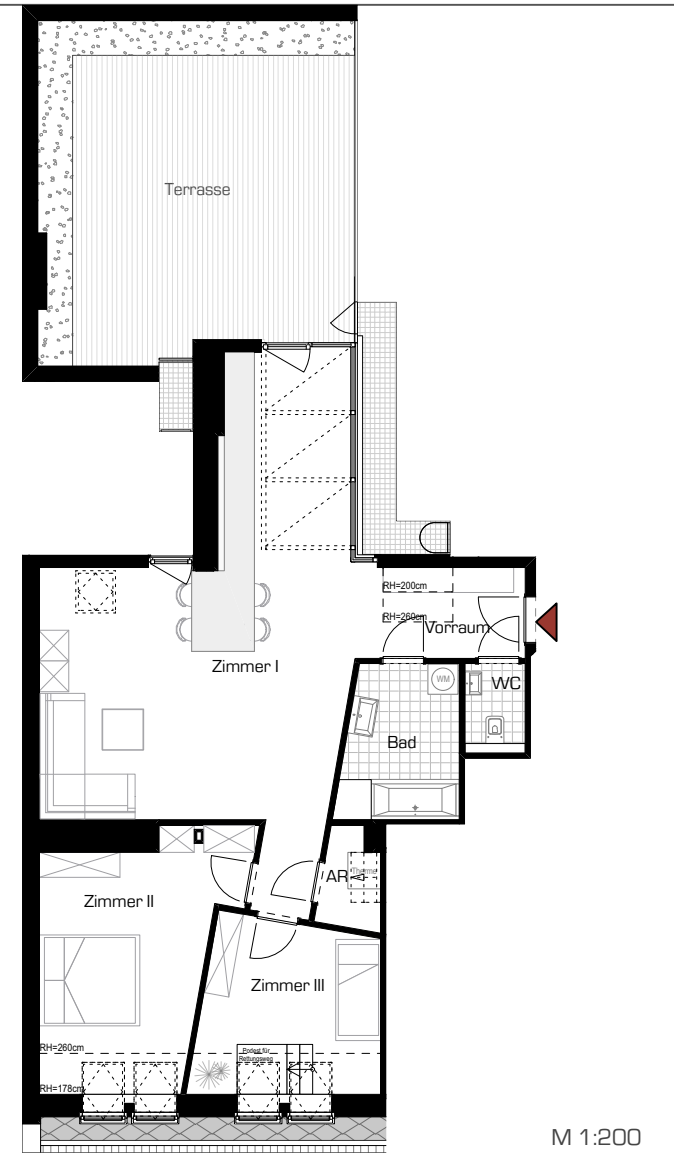
M 1:500

### 1.DG

Zimmer I	44,42 m <sup>2</sup>
Zimmer II	17,19 m <sup>2</sup>
Zimmer III	12,06 m <sup>2</sup>
Vorraum	5,80 m <sup>2</sup>
Abstellraum	2,22 m <sup>2</sup>
WC	1,82 m <sup>2</sup>
Bad	6,83 m <sup>2</sup>
Terrasse / Balkon	41,47 m <sup>2</sup>

### Gesamt

Wohnnutzfläche	<b>90,34 m<sup>2</sup></b>
Terrasse / Balkon	41,47 m <sup>2</sup>



M 1:200

Planstand  
31.07.2019

